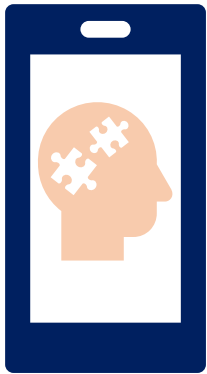


How should we use mental health apps?



An opportunity to join a group of individuals to help guide research to find out how to group app users based on their usage and identify which of these group has the most improved outcomes.

Apply to Join

By utilising your own experience of how you have used mental health apps, you will help to ensure the research and resulting guidance is useful and relevant for other mental health app users.



Time Commitment:

Attend a two-hour meetings every 6 months, 4 meetings in total. Two will be held online and two will be held in-person at the White City Campus.